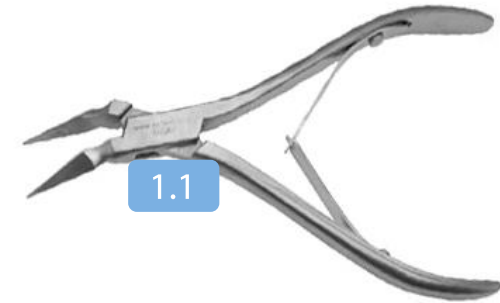


# Dr Jerzy Gawor Rescue Kit

Open In Case of VETERINARY DENTAL Emergency





3.4



3.1



3.2



3.3



# Legend

## Grasping instruments

- 1.1 D3060 - Fine Root tip pickup, miniforceps
- 1.2 D5011 - Fragment extraction Stieglitz curved forceps
- 1.3 D5022 - Pincet Manual forceps

## Elevating instruments

- 2.1 D1005S - tooth root pick elevator
- 2.2 D1001SH - Winged elevator 1mm

## Luxating elevators

- 3.1 SRE10 - Straight root elevator – 1.0 mm
- 3.2 SRE09 - Straight root elevator – 0.9 mm
- 3.3 SRE08 - Straight root elevator – 0.8 mm
- 3.4 D4501 - Luxator 1mm

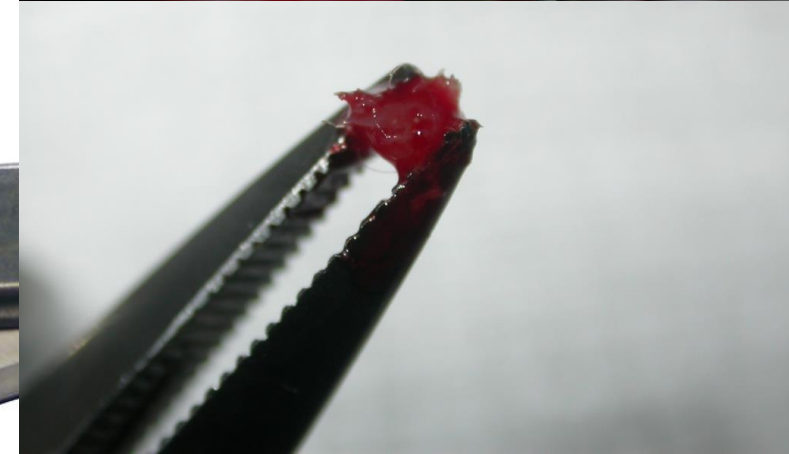
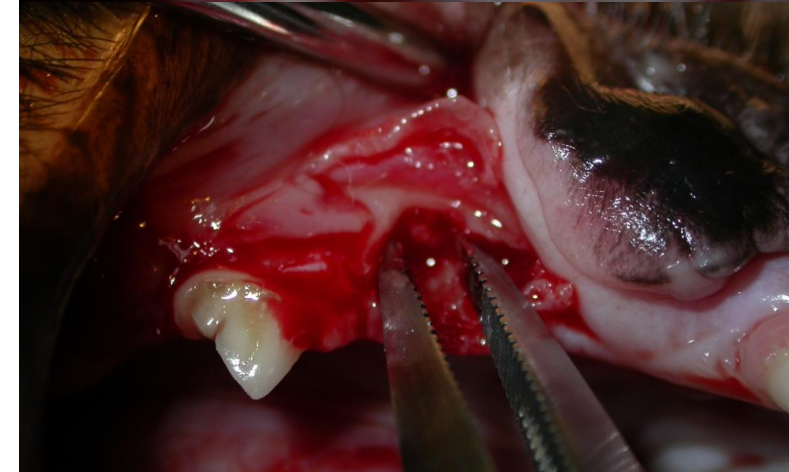
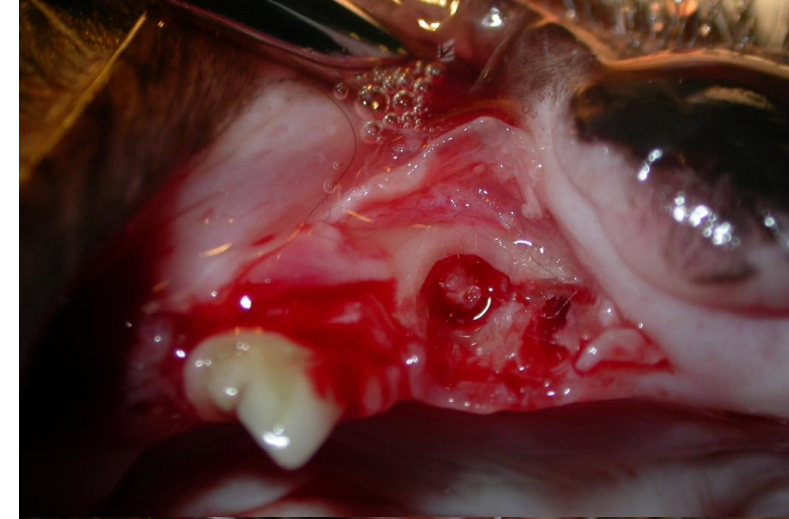
## 1.1 Grasping instruments

**Root tip extraction curved forceps (Stieglitz forceps)** to catch and retrieve small tooth or bone fragment with firm grasp without additional elevation.

Medium size is sufficient;

The beaks are sensitive and require control and cautious use;

Falling off usually damage them;



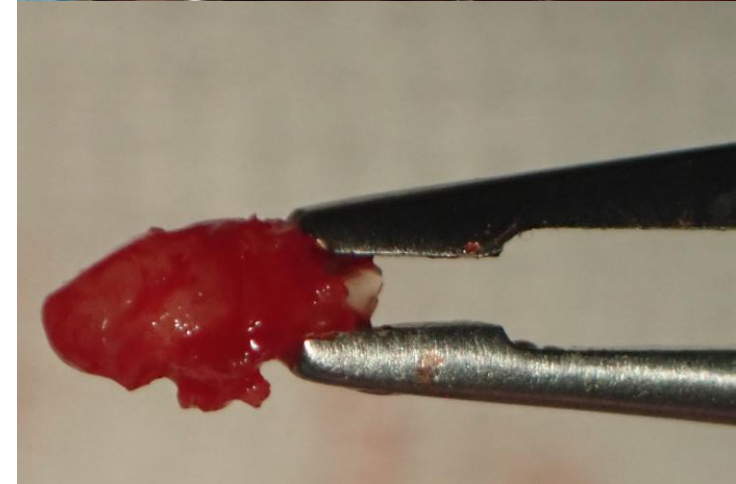
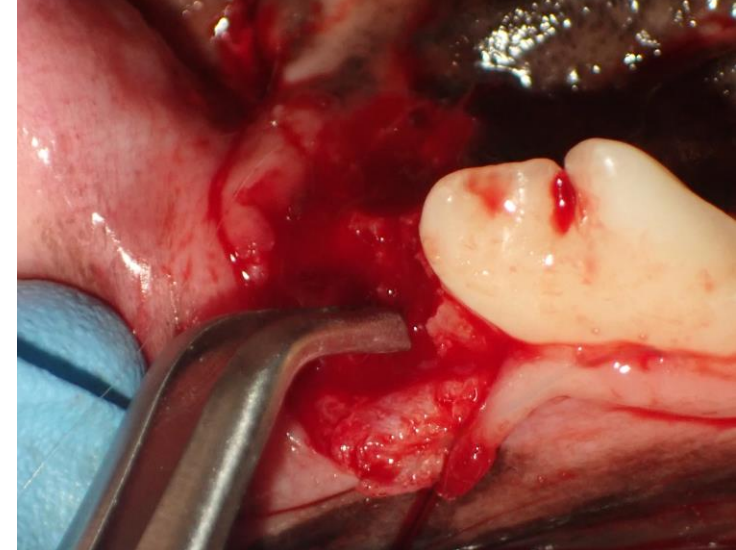
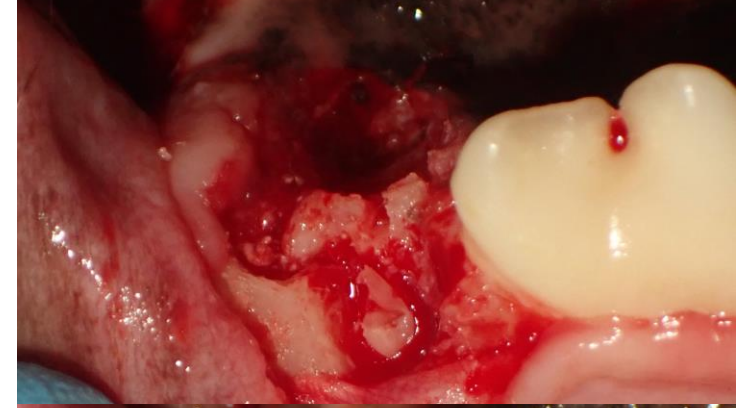
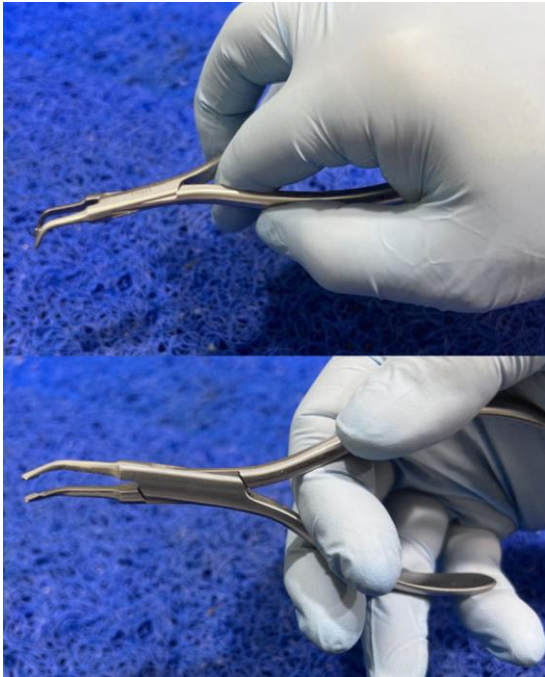
## 1.2 Grasping instruments

**Fine Root tip pickup, miniforceps** to catch, gently elevate with manipulation and retrieve small tooth or bone fragment with delicate grasp.

Medium size is sufficient;

The beaks are delicate but resistant and require control and cautious use;

Use in oversized objects can damage them;



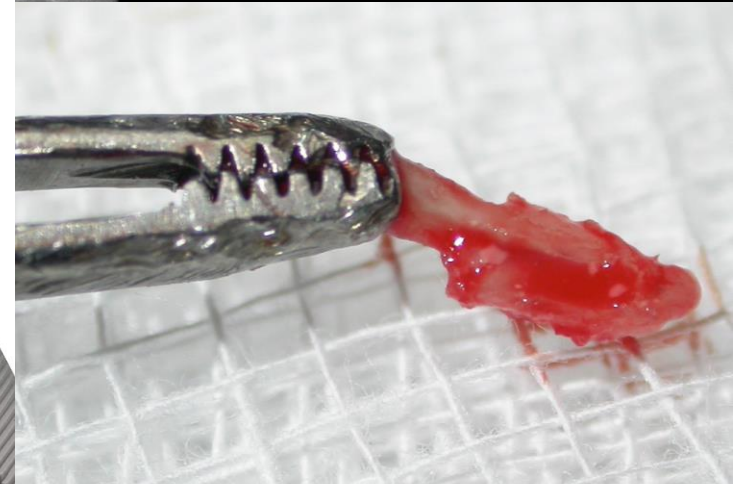
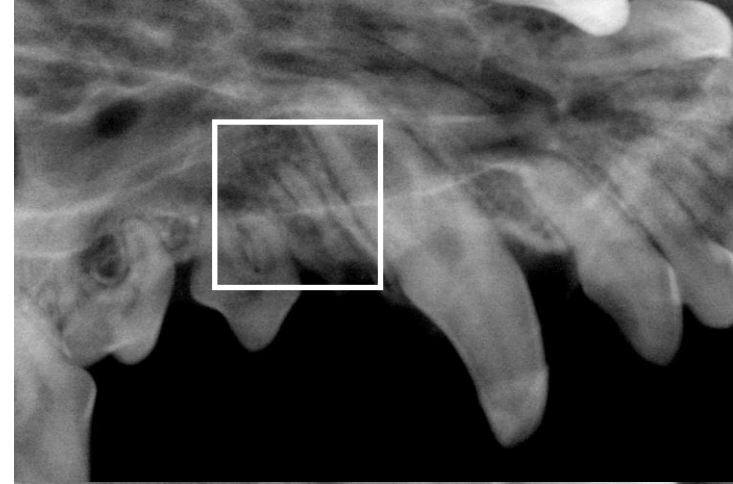
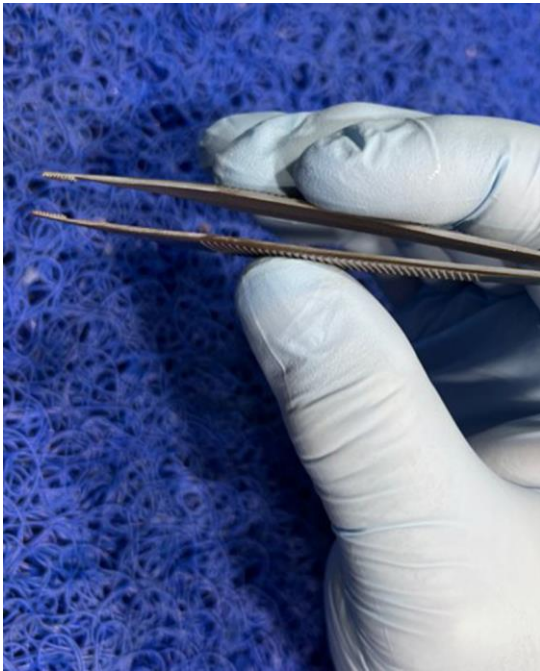
### 1.3 Grasping instruments

**Pincet Manual Forceps** to catch and retrieve small tooth or bone fragment with very delicate grasp.

Small size provides better control;

The beaks are delicate but resistant and require control and cautious use;

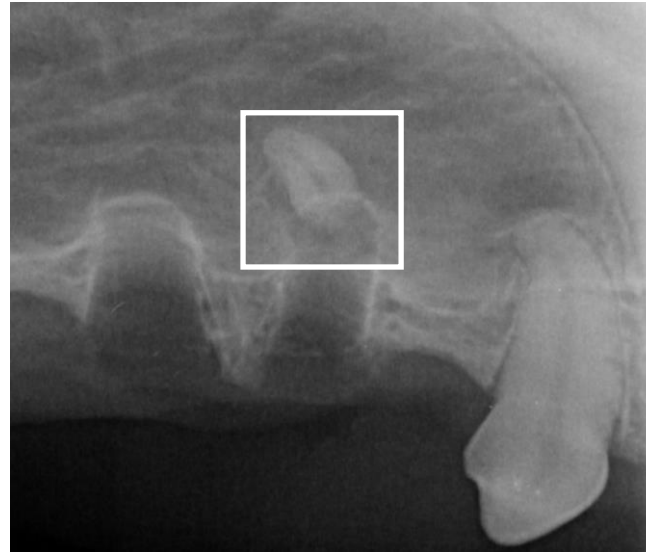
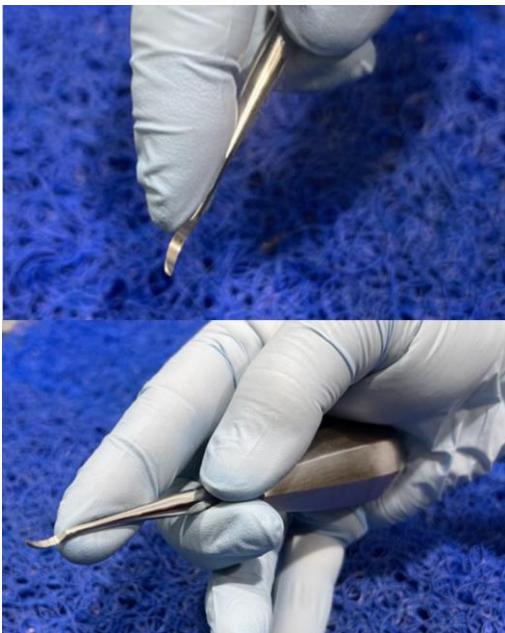
Use in oversized objects can damage them;



## 2.1 Elevating instruments

**Root Tip Pick** to elevate and retrieve small tooth or bone fragment at the alveolar socket or even partially intruded out of the socket.

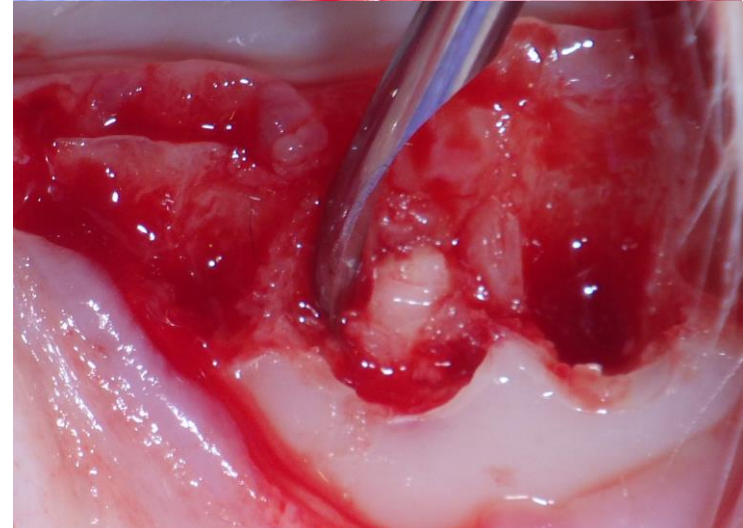
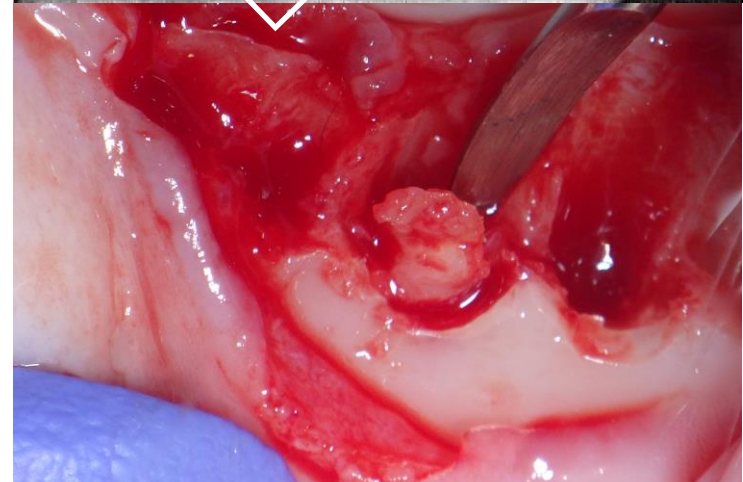
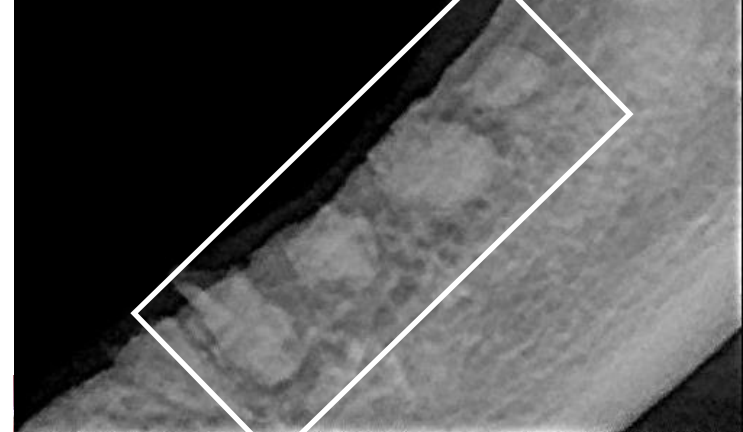
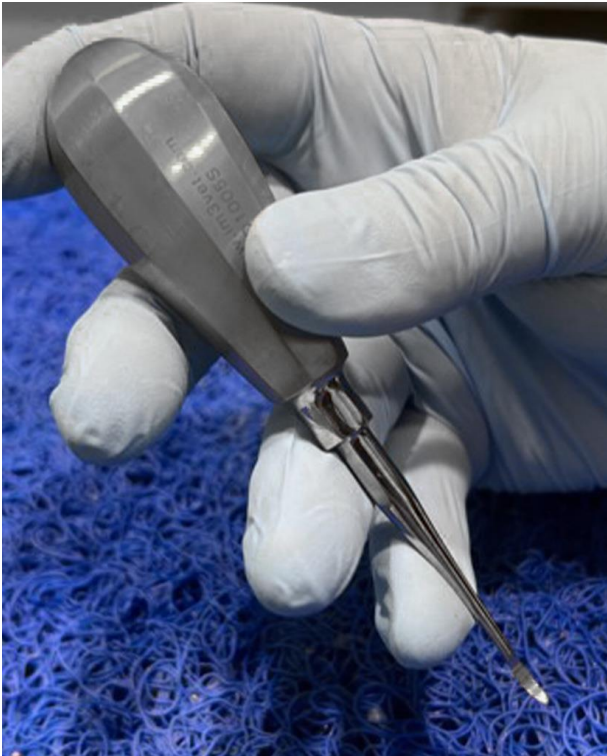
Use in oversized objects can damage them!



## 2.1 Elevating instruments

**Root Tip Pick** to elevate and retrieve small tooth or bone fragment at the alveolar socket or even partially intruded out of the socket.

Use in oversized objects can damage them!

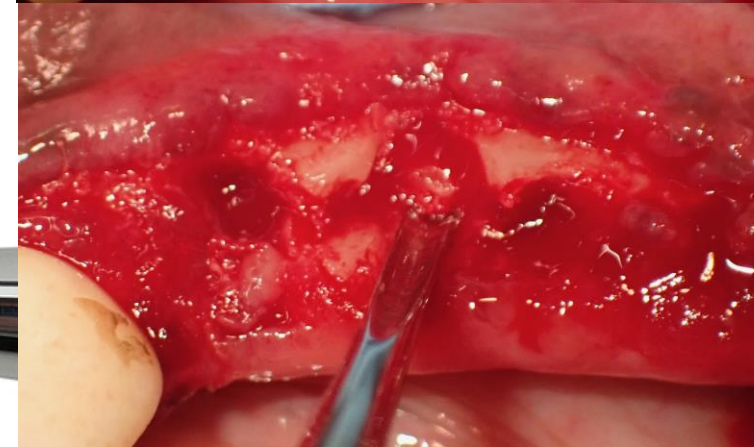
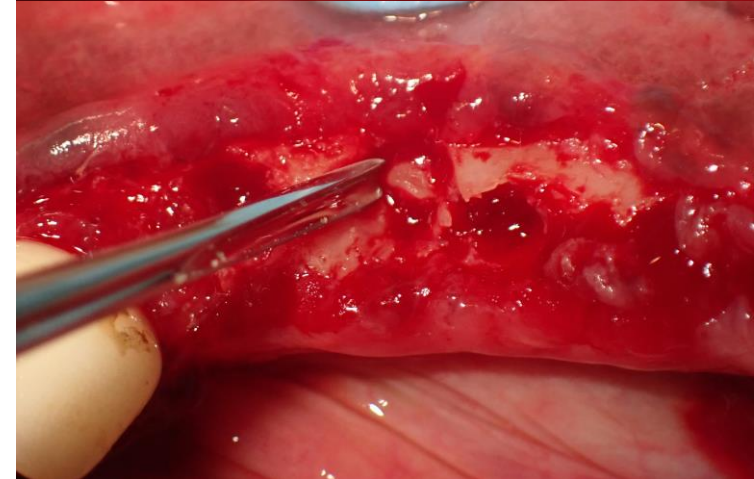
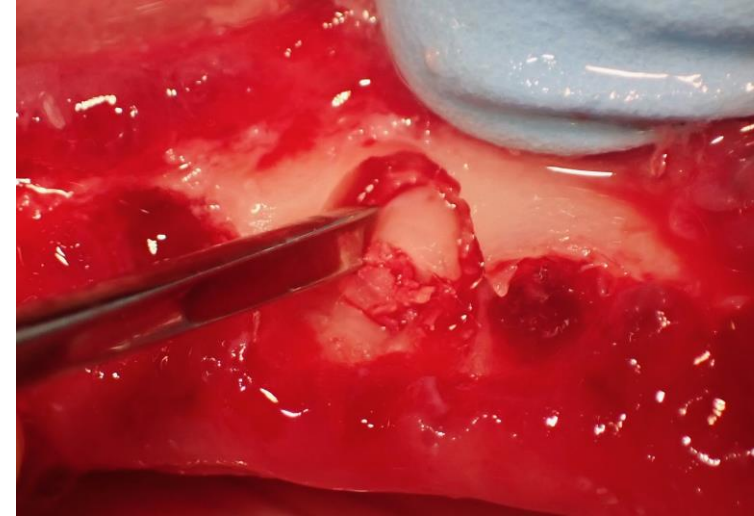
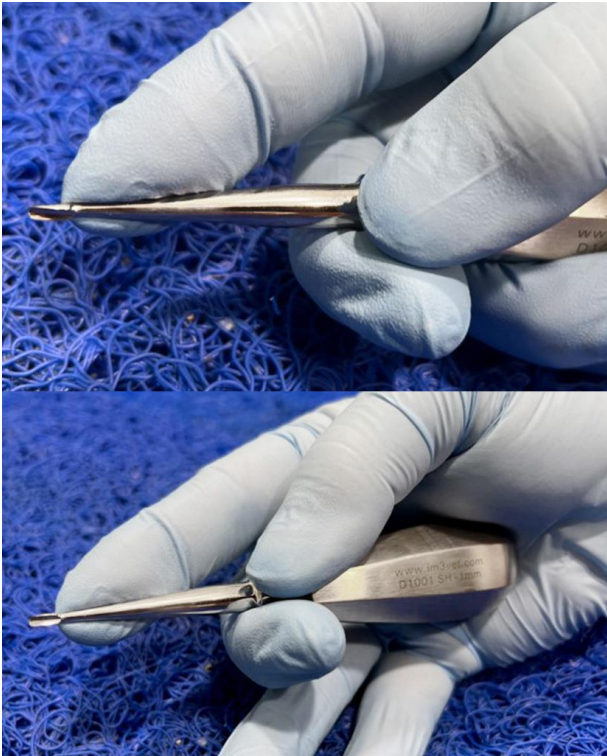


## 2.2 Elevating instruments

**1 mm winged elevator** to luxate/elevate tiny root fragments.

The working tip is fragile requires control and cautious use as well as sharpening.

Strong elevation can damage them;

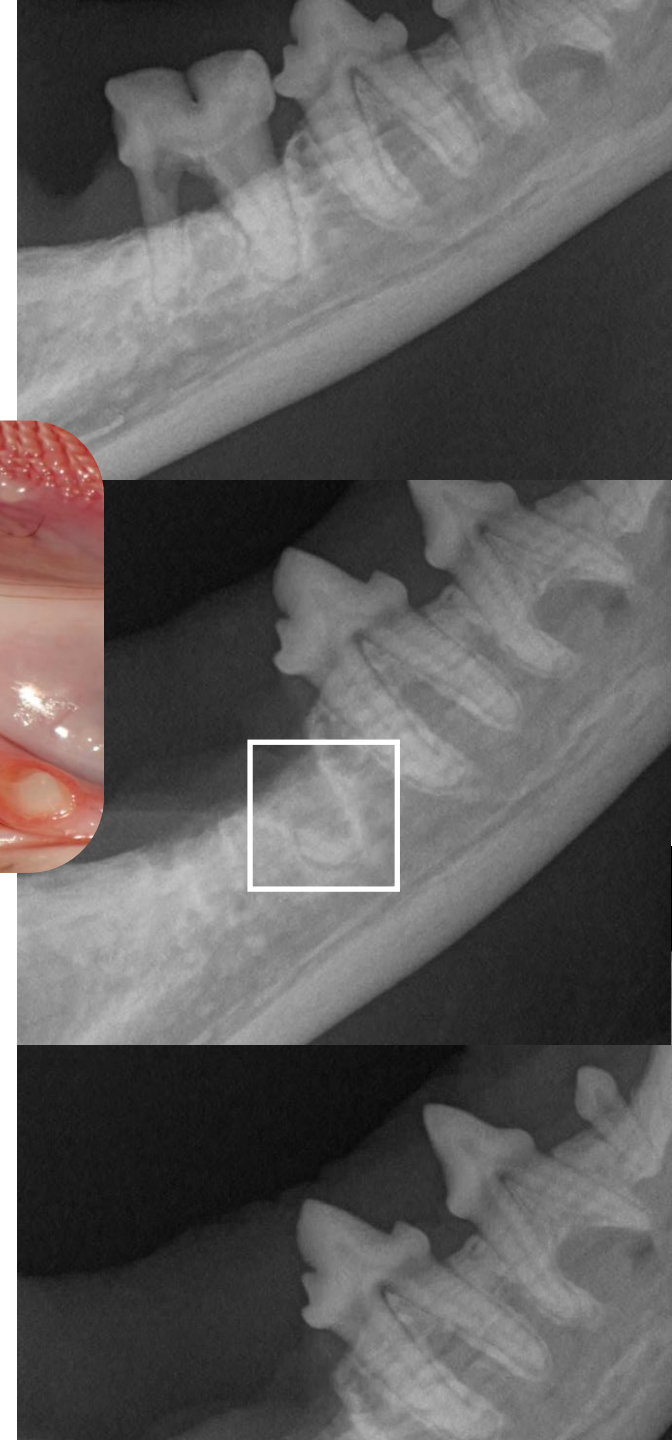
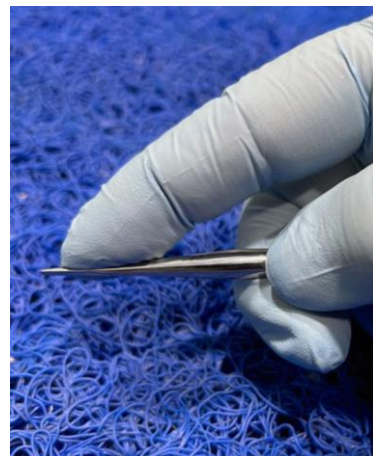
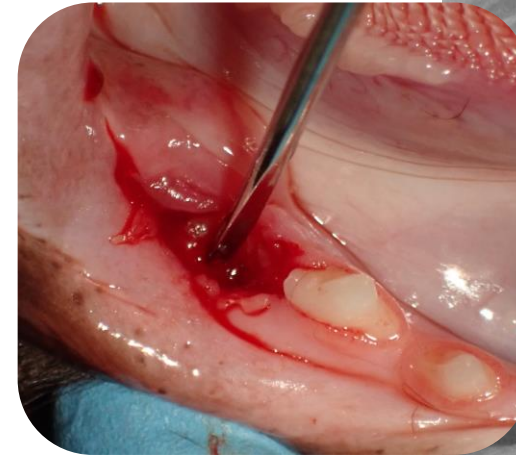




### 3.1 Luxating elevators

**Straight Root Elevator** to luxate/elevate tiny root fragments.

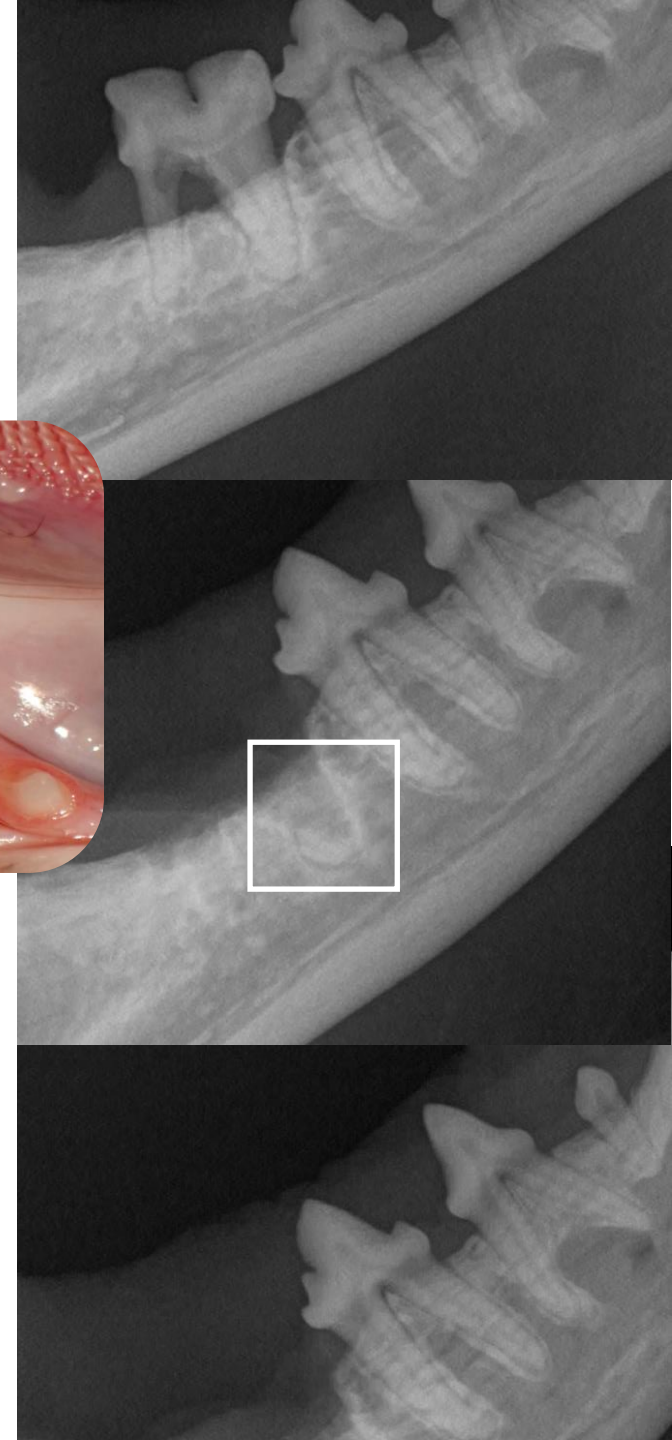
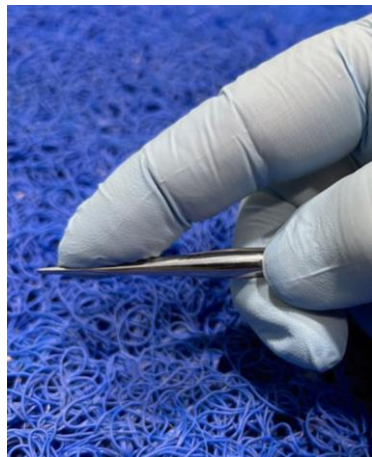
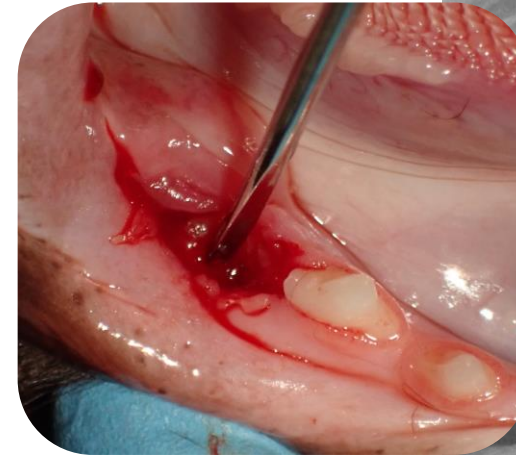
The working tip is fragile requires control and cautious use as well as sharpening. Strong elevation can damage them!



### 3.2 Luxating elevators

**Straight Root Elevator** to luxate/elevate tiny root fragments.

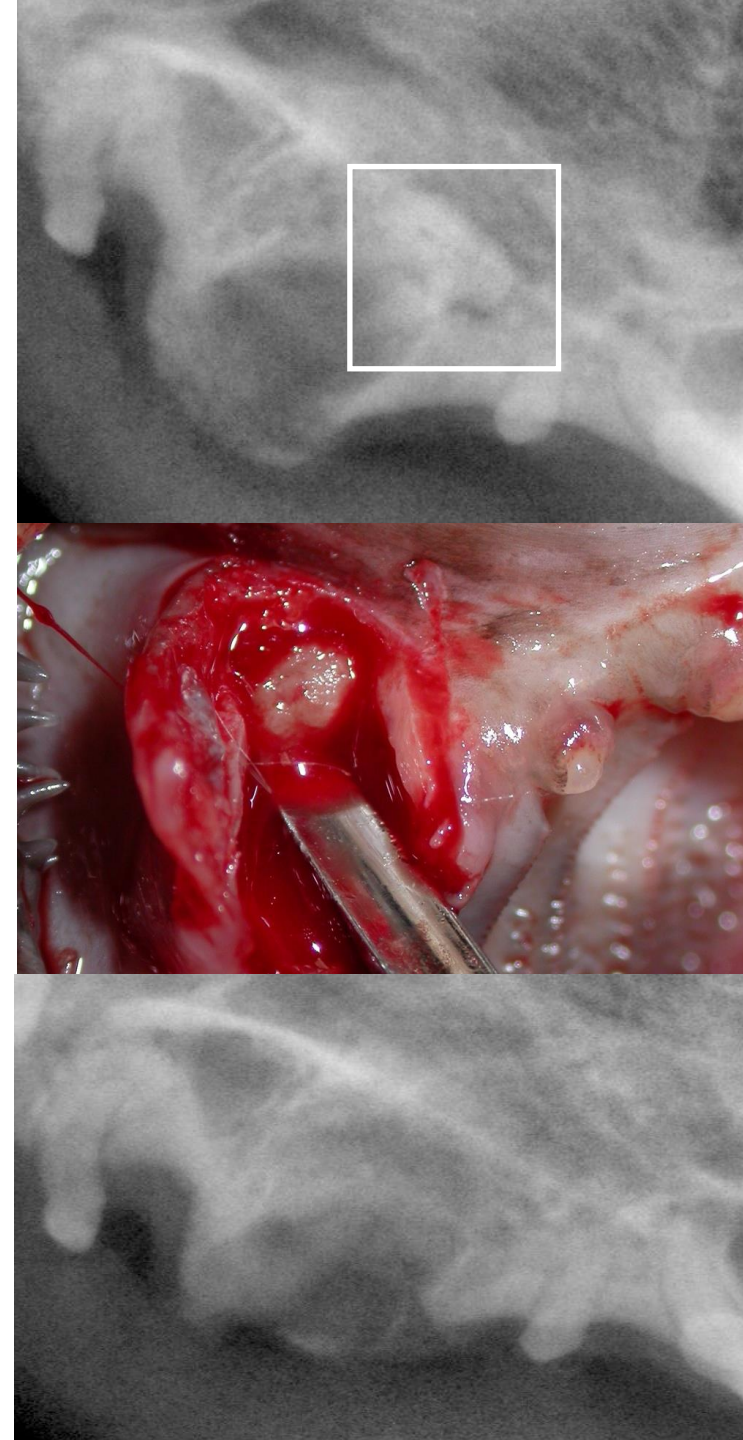
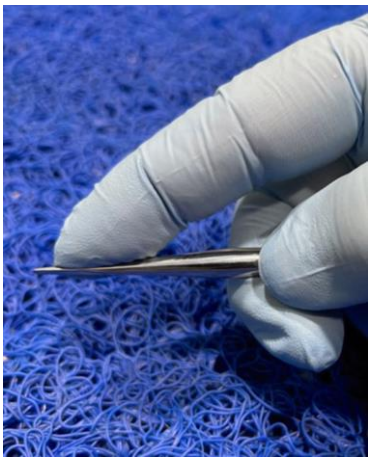
The working tip is fragile requires control and cautious use as well as sharpening. Strong elevation can damage them!



### 3.3 Luxating elevators

**Straight Root Elevator** to luxate/elevate tiny root fragments.

The working tip is fragile requires control and cautious use as well as sharpening. Strong elevation can damage them!



## Recommended Burs

*Standard burs* - for cats and easily accessible in areas of problem.

*Surgical length burs* - wherever problem is deeply located, and visibility is compromised.

*Extra surgical length* - in extremely large dogs and/or deeply located areas of interest.

**D8012** - Dental Bur - Xcut Fissure Taper 699 - 19mm FG

**C7015** - Dental Bur - Xcut Fissure Taper 701L - 25mm FG (surgical length)

**D7815** - Dental Bur - Xcut Fissure Taper 702L - 25mm FG (surgical length)

**D7040** - Dental Bur - Diamond Round 4 - Med Grit - 19mm FG

**D8379** - Dental Bur - Diamond Egg 379 023 - Med Grit - 19mm FG

**D7971** - Dental Bur - Diamond Round End Taper 856L - Med Grit - 19mm FG

**C9085** - Dental Bur - Round 2 - 25mm FG (surgical length)

**C5600** - Dental Bur - Root Tip - 30 mm FG

Find out more at [www.im3vet.com](http://www.im3vet.com)